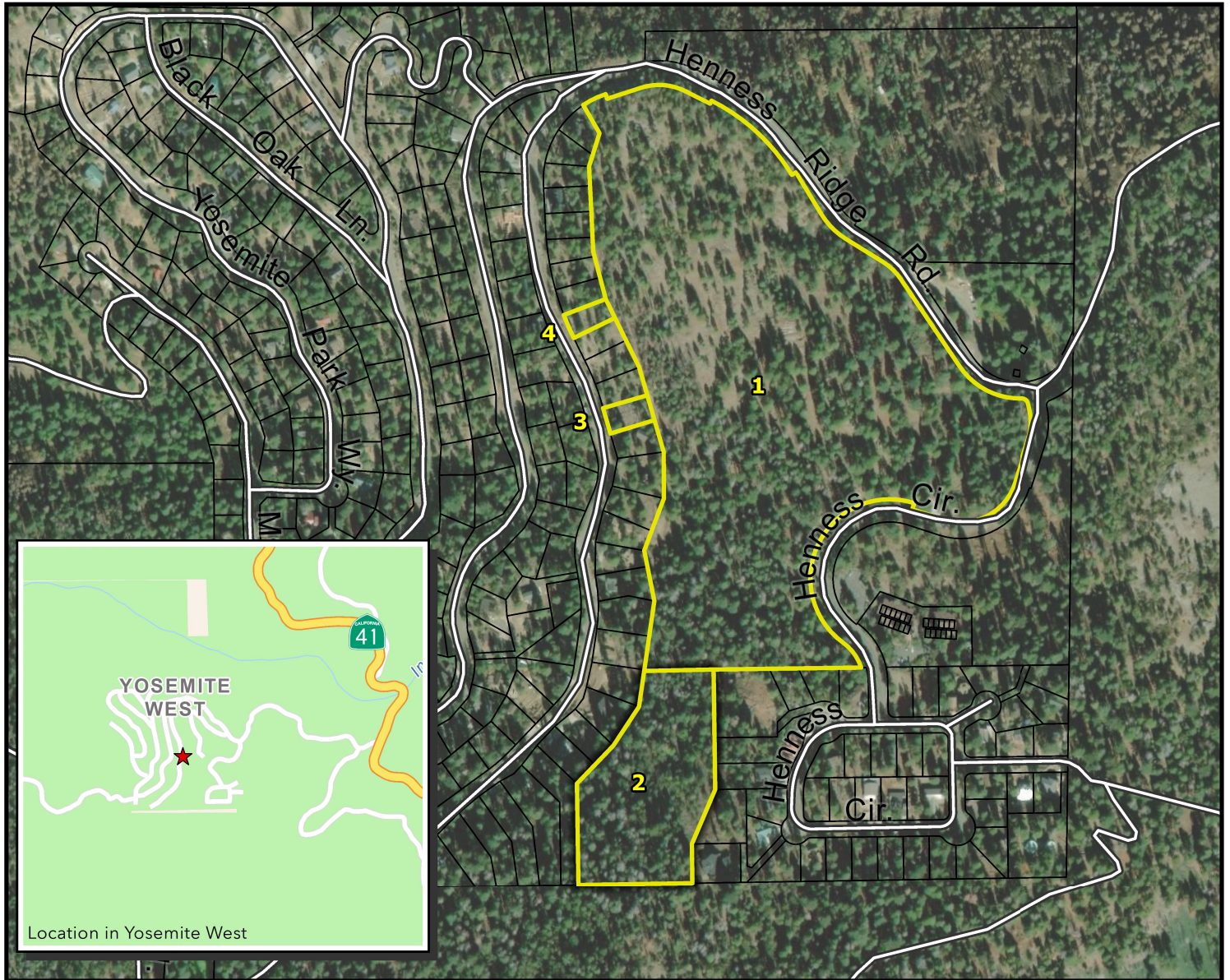
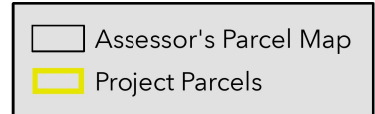


Mariposa County Planning Department Project Vicinity Map



0 100 200 Feet
1:5,859



PROJECT TYPE: Certificate of Compliance 2019-175 & Lot Line Adjustment 2020-053

APPLICANT: Yosemite Foundation

APNs: 006-130-0480; 006-150-0020; 006-120-0270; 006-120-0310

SITE ADDRESS: multiple, Yosemite West

Coordinate System: NAD 1983 State Plane California III FIPS 0403 Feet

Date: Thursday, May 28, 2020

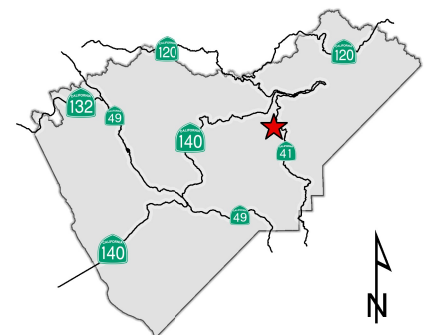
Data Source: Mariposa County Planning Department GIS;

Assessor's Parcel Map Update: 02/2019

Map Credit: BEN OGREN, Sr. GIS Specialist



Mariposa County Planning Department
PO BOX 2039 5100 Bullion Street
Mariposa, California 95338-2039
209.966.5151 FAX 209.742.5024
mariposaplanning@mariposacounty.org
<http://www.mariposacounty.org/planning>



Mariposa County makes no warranty regarding the accuracy of the GIS or the analysis and conclusions resulting from using our GIS data.

Location in Mariposa County