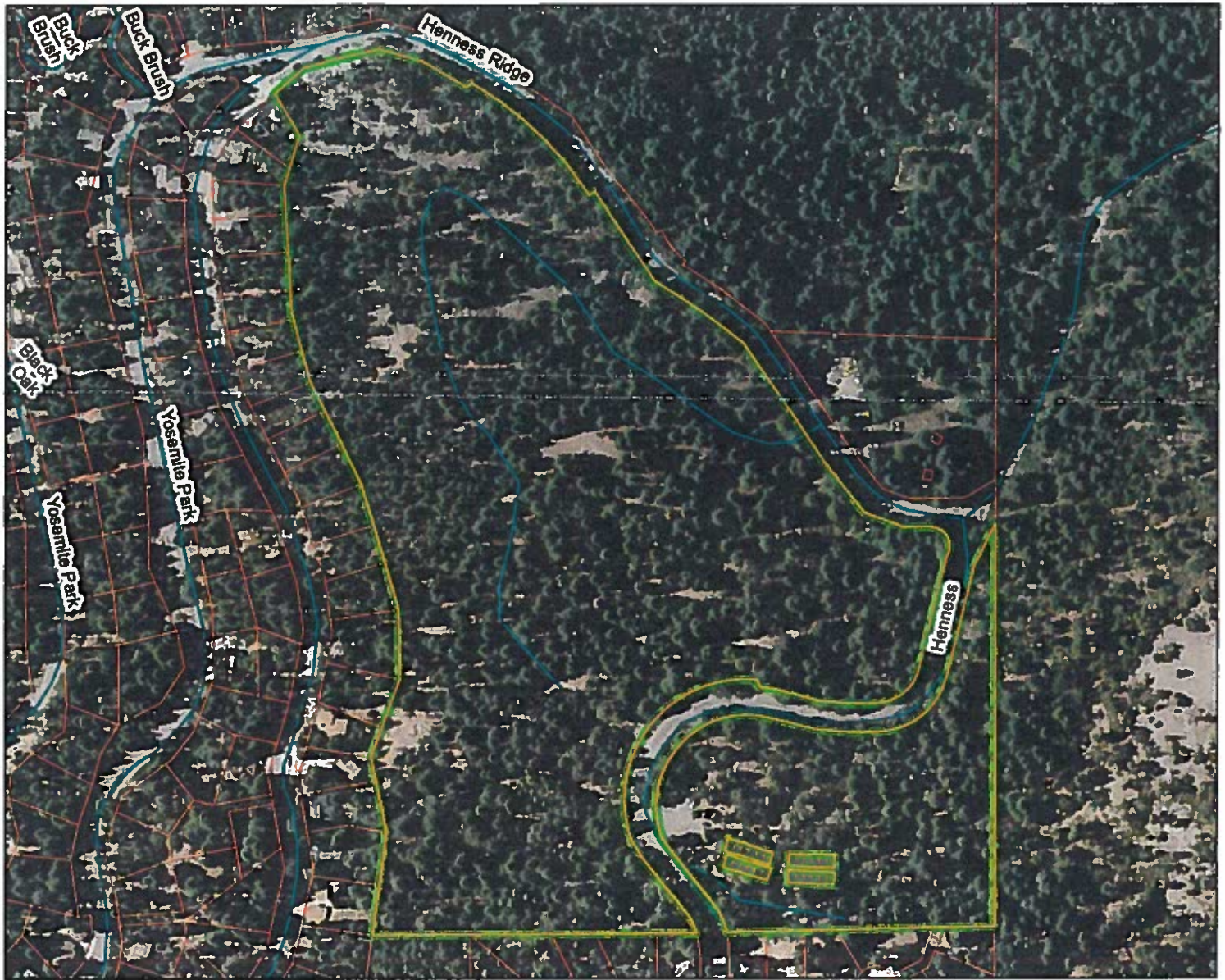


Mariposa County Planning Department Project Vicinity Map







0 50 160 Feet
1:3,915

PROJECT TYPE: Certificates of Compliance No. 2016-158

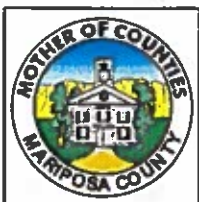
APPLICANT: Yosemite West Associates

APN: 006-150-003 and 006-150-002

SITE ADDRESS: 7548 Henness Ridge Road

-  Yosemite West Associates
-  Assessor's ParcelMap
-  State Highway
-  Road

Map Credit: A. Arias, Senior Planner
 Coordinate System: NAD 1983 StatePlane California III FIPS 0403 Feet
 Date: Wednesday, September 21, 2016
 Data Source: Mariposa County Planning Department GIS, Assessor's Parcel Map Update, November 30, 2015



Mariposa County Planning Department
 PO BOX 2039 5100 Bullion Street
 Mariposa, California 95338-2039
 209.966.5151 FAX 209.742.5024
mariposaplanning@mariposacounty.org
<http://www.mariposacounty.org/planning>



