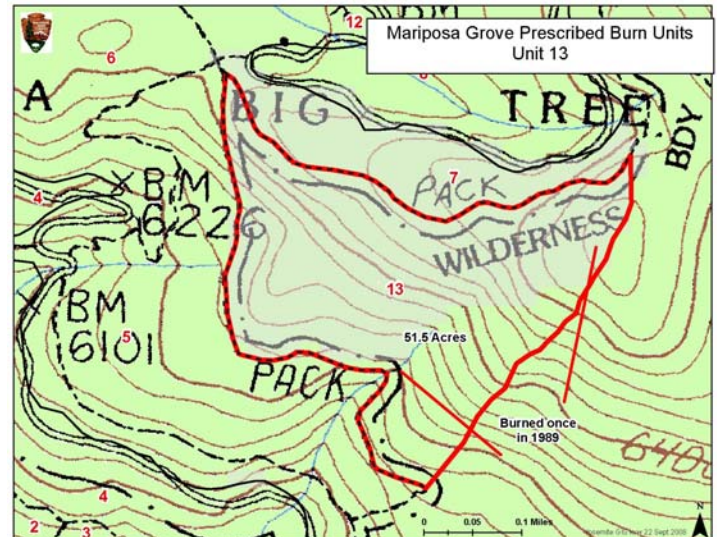
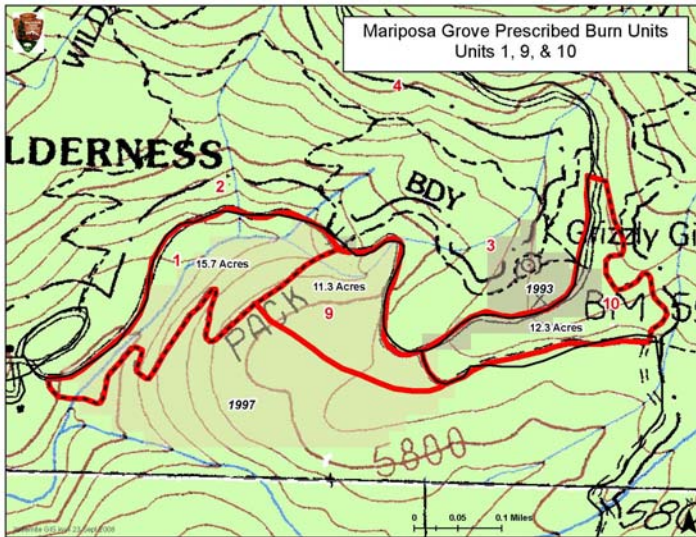




Mariposa Grove of the Giant Sequoias Prescribed Fire September 30, 2008



The National Park Service plans to conduct a prescribed fire in the Mariposa Grove of Giant Sequoias. Weather and air quality permitting, this fire is scheduled to begin Tuesday, September 30, 2008. The Grove is located in the Wawona area of the Park and near the southern entrance gate, in Mariposa County. This burn consists of 4 units depicted above. Approximately 90 acres are planned to be burned. Ignition is expected to last one to two days. Fire information Officers and Interpretive Rangers will be present daily to answer visitor questions.

Fire produces the optimum conditions for Giant Sequoia reproduction and propagation. Fires not only removes the accumulated layers of dead woody debris exposing nutrient rich mineral soil, but dries the cones allowing the seeds to shed. Fire also creates holes in the forest canopy while eliminating shade tolerant competition. Parts of each of these units have been burned in the past and are comprised primarily of White Fir and other mixed conifers.

No trail closures are anticipated. Daily tram tours and access to the Grizzly Giant will continue. Visitors will experience diminished air quality due to smoke accumulations. However, the burn is planned during ideal atmospheric conditions to mix and lift the smoke out of the area.

Fire has a natural role in maintaining healthy ecosystems in Yosemite. Decades of fire suppression have altered the park's natural fire regime. The forests have become dense continuous stands of shrubs and trees increasing the risk of uncontrollable Wildland fires. Prescribed fire is designed to thin forests and reduce unnatural fuel loads in areas that are in close proximity to visitor use areas as well as public and private structures.

Park fire managers will monitor smoke on a consistent basis. People with respiratory problems should use caution when exerting themselves in smoky areas.

For further information:

- Yosemite's Fire Information Office: (209) 372-0480
- Yosemite's Prescribed Fire Manager, Mike Beasley: (209) 375-9574
- Yosemite Fire Management Website: <http://www.nps.gov/yose/parkmgmt/2008fire.htm>